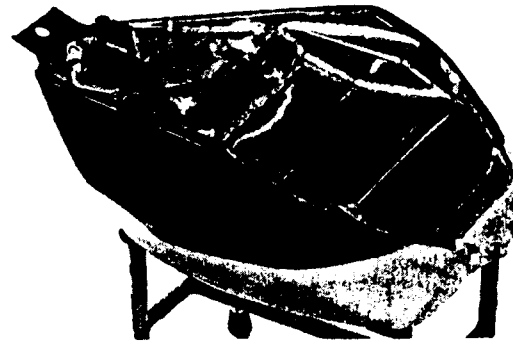
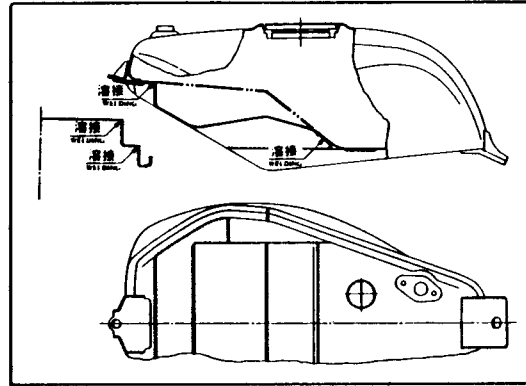


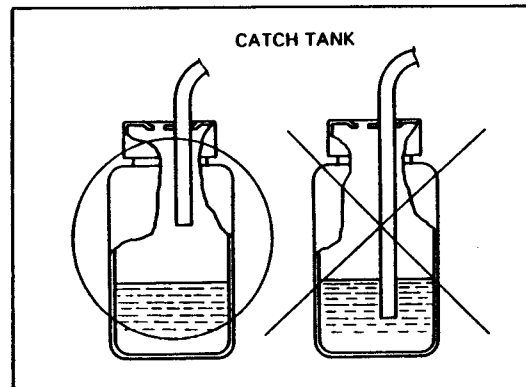
- When modifying the fuel tank for 24 liter capacity, do it yourself as shown in the illustration to maintain the necessary air volume in the carburetor side.
Use plate of A5052P-0 (1.0 mm) to modify the fuel tank.
(These illustrations are shown enlarged on the next page).

NOTE:

After welding, be sure to check the fuel tank for leak by pressurizing the tank at 0.2—0.3 kgf/mm².



- Due to the race regulation, the volume of the fuel tank catch tank must be more than 250 cc.
Use the optional catch tank, 19602-NF4-810 (HRC part) or make it by yourself. It is necessary to prevent negative pressure from being built up in the fuel tank even when fuel accumulates in the catch tank (by allowing air to be returned back into the fuel tank).



- フューエルタンクを24ℓに改修する場合はキャブレーター側のアアボリュームを確保するため図を参照して自作して下さい。
アルミ板はA5052P-0材(t1.0)を使用して下さい。
(次頁にイラストを拡大しております)

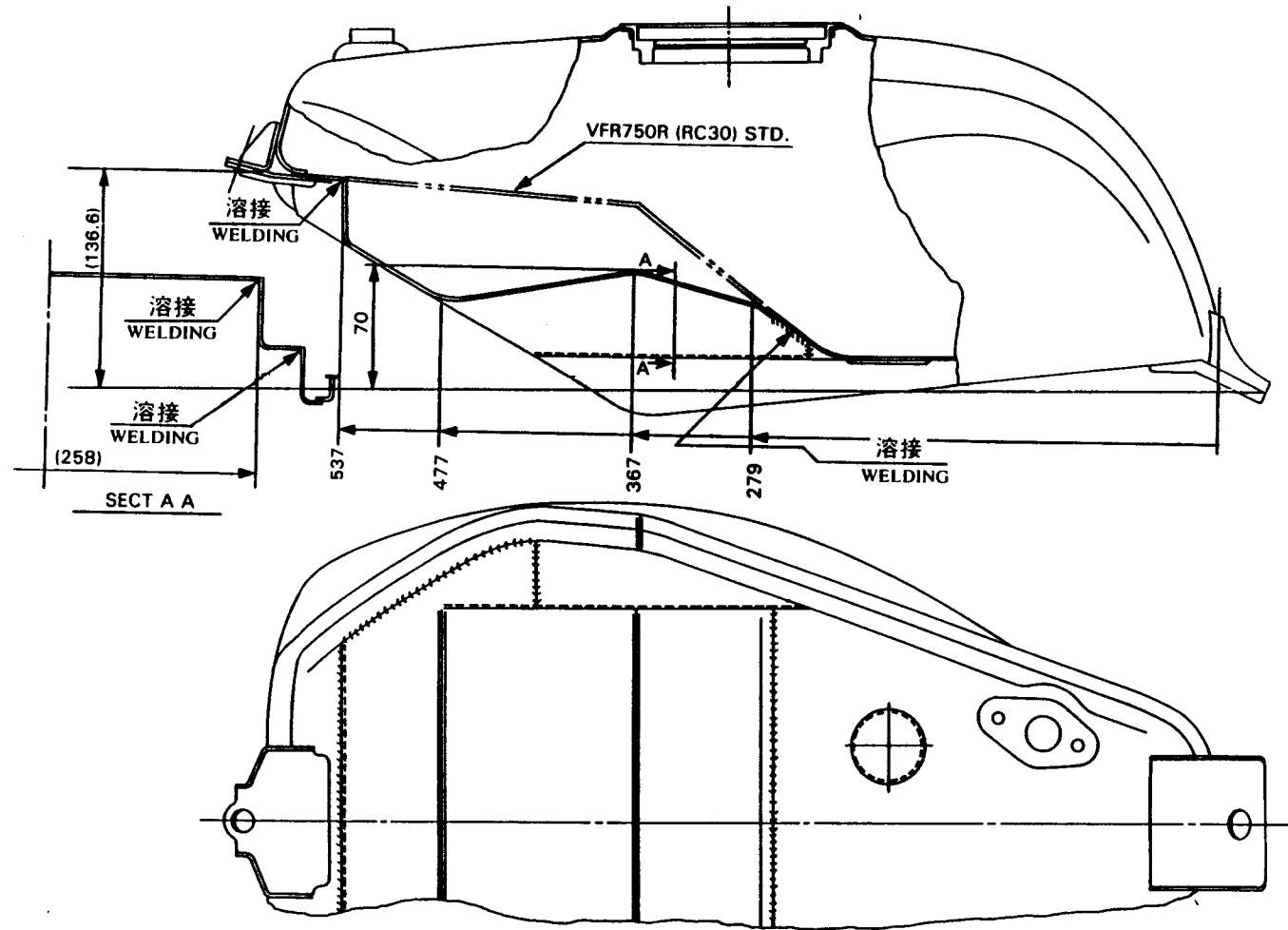
<注意>

- 溶接後は必ず圧検を実施して漏れがないかチェックして下さい。
完全に各部をふさいで0.2~0.3kgf/mm²の圧力をかけエアが出ないかチェックする。

- フューエルタンクのキャッチタンクはレギュレーションにより250cc以上の容積を確保しなければいけません。
19602-NF4-810 TANK, CATCH 250 (HRCパーツ)を用意するか各自準備して下さい。
またキャッチタンク内にガソリンが留まってもフューエルタンク内が負圧にならないよう(タンク内にエアが戻るようにする)に注意して下さい。

• Reworking on Fuel Tank (24 l)

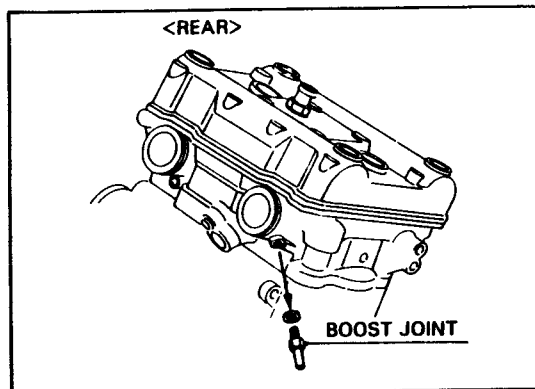
● フューエルタンクの改修(24 l)



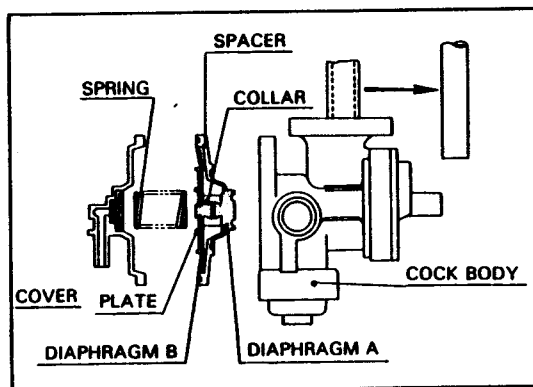
4. Fuel auto cock

Rework on the fuel auto cock if the machine is used for competition. Failure to follow this precaution will result in insufficient supply of fuel to the engine:

- 1) Plug the boost joint on the left side of the rear bank cylinder head.



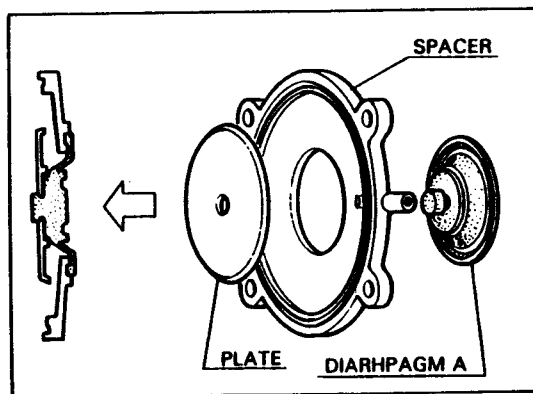
- 2) Remove the diaphragm cover from the fuel auto cock.
- 3) Remove the diaphragm assembly from the spacer.
- 4) Disassemble the diaphragm A, diaphragm B, plate and collar, and retain only the diaphragm A and plate.
- 5) Amount of fuel from the auto cock can be increased by removing the pipe when it is set in ON.



- 6) Reinstall the plate on the diaphragm A inside out as shown, and install them on the fuel cock body.

NOTE:

- The spring, diaphragm B and collar are not used.



4. フューエルオートコック

VFR750R(RC30)に装備されているフューエルオートコックはレース用として使用する場合、燃料の流量不足の要因となりますので以下の要領で改修して下さい。

- 1) リヤバンクシリンダーヘッド左側についているブーストジョイントをメクラにする。

- 2) フューエルオートコックのダイヤフラムカバーを外す。
- 3) スパースーについているダイヤフラムCOMPを抜く。
- 4) ダイヤフラムAおよびB、カラー、プレートは単品にばらす。(ダイヤフラムAは使用するので傷等つけないこと)
- 5) パイプを取るによりONでの流量を増すことができる。

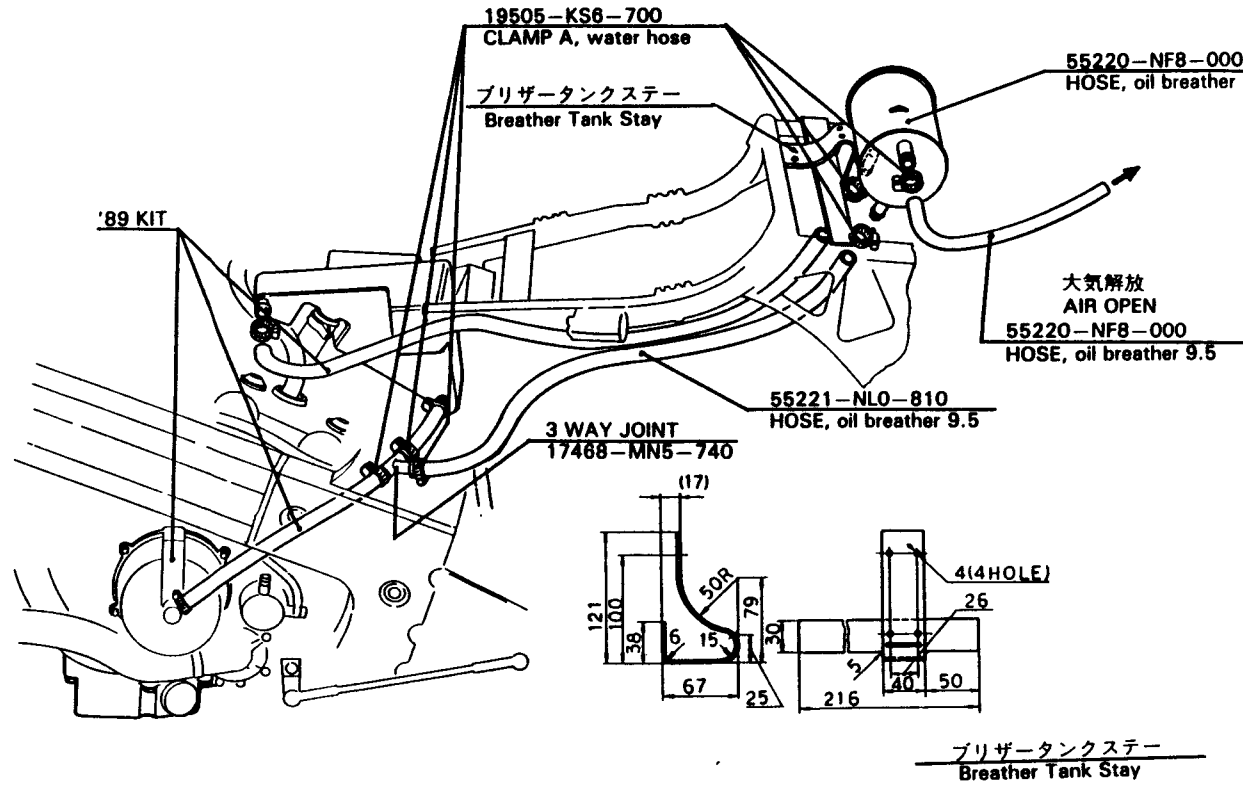
- 6) ダイヤフラムBについているプレートを外し、ダイヤフラムAに図のような向きに組付けフューエルコックASSYにする。

<注意>

スプリング、ダイヤフラムB、カラーは使用しない。

5. Breather piping

5. ブリザーパイピング



Set the kit parts as shown in the illustration.

NOTE:

Please purchase and use the catch tank shown in the illustration if the machine is used for endurance races, etc.

NOTE: BREATHER TANK STAY

Material: Aluminum plate

Thickness: 2.0 mm

Weld the breather tank stay to the seat rail as per the instructions given in the sketch.

Install the breather case with the hose joint facing upward.

図の様にKIT部品をセットする。

〈注意〉

・耐久レース等の時は、図の中のキャッチタンクを御購入願います。

・ブリザータンクステー

材質：アルミ板

板厚：2.0

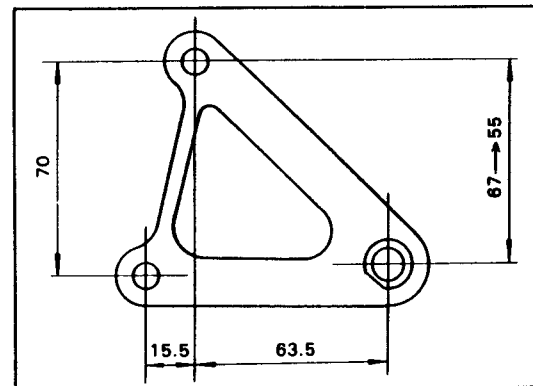
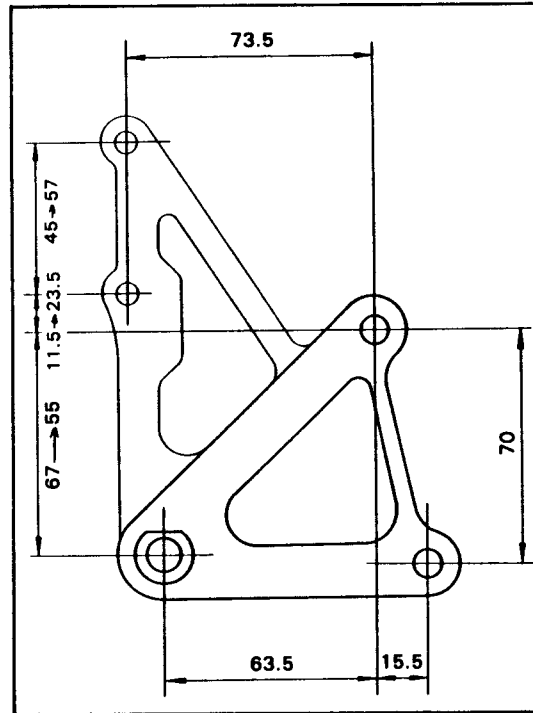
ブリザータンクステーは図を参考に自作しシートレールに溶接します。

ブリザーケースは極面のジョイント部が真上に位置する様にタイラップにて固定して下さい。

7. R/L Steps

This kit does not include any step parts. The sketches on the right show the recommended step position and the shape of the step holder on the VFR750R (RC30) for your reference.

67
VFR750R (RC30) → 55
Recommended valve



7. R/Lステップ

- ・ステップ廻りのパーツはキットとして設定しておりません。

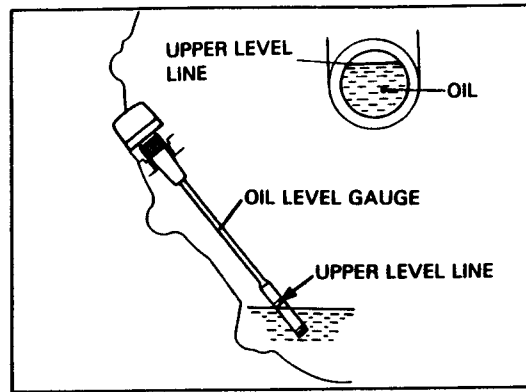
尚ステップ位置の推奨値およびVFR750R(RC30)のステップホルダー形状を示しますので、ポジション変更の必要があればこれを参考に自作して下さい。

67
VFR750R(RC30) → 55
推奨値

NOTE:

More oil will be lost through the breather when the engine is tuned to racing specification. In order to maintain the correct amount of oil in the engine, observe the following:

- Place the motorcycle upright on a level surface; do not place it on the sidestand.
 - Do not screw in the oil level gauge. Just insert it until it seats.
 - Fill the crankcase with recommended oil up to the UPPER LEVEL LINE on the dipstick. Do not overfill over the UPPER LEVEL LINE.
 - If the R-cover from the kit is installed, use the oil level inspection window to fill the engine with oil.
-
- When the engine has undergone overhauling, warm it up for a few minutes before adjusting the oil level.
 - Check the oil level and record the oil consumption for every race.
 - For endurance races, record the time or distance travelled until 500 cc of oil is consumed to prevent a starved engine.



<注意>・エンジンオイル量

レース仕様の場合 常用回転域が高くなるためエンジンオイルの吹出し量が多くなります。従ってエンジンオイル量は図のように管理して下さい。

- ①スタンドはかけず車体を垂直にする。
- ②差し込むだけでねじ込みはしない。
- ③レベルゲージは倒れやすいのでねじ込み方向に真っすぐ差し込むこと。
図のようにアッパーレベルラインの下端に油面を合せて下さい。
- ④KITのRカバー使用時はオイル確認窓でアッパーレベルラインまで入れること。

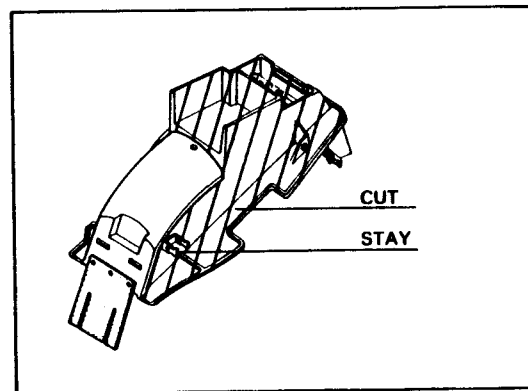
※エンジン分解時は暖機エンジン停止後2～3分してから上記と同じになるように調整のこと。

※エンジンオイル量は走行毎にチェックしオイル消費量を把握するようにして下さい。

※耐久レースではオイルがアッパーレベルから500cc消費する走行距離(時間)を把握しておき、途中アッパーレベルまで給油することが必要です。

6. Rear fender

When tire replacement is required during the race, cut the rear fender as shown to prevent interference. Keep the regulator stay because it will be used when changing the location of installation.



6. リヤフェンダー

レース用タイヤ装着の場合はリヤフェンダーと干渉するため図を参照にカットします。この際レギュレーターステーは取付位置変更の際使うので残しておきます。

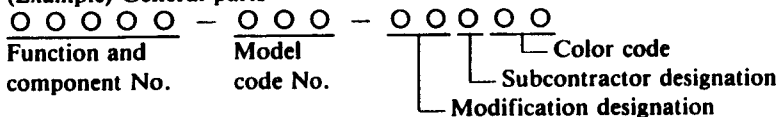
INSTRUCTION FOR USE OF PARTS LIST

INFORMATION ON PARTS LIST

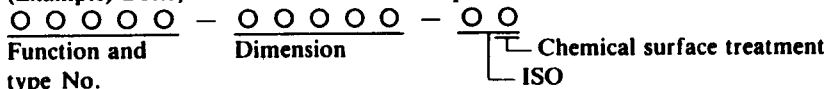
- When placing an order on parts:
 - ・ This Parts List cover the parts which are available through your dealer.
 - ・ Always specify the part numbers when placing an order on parts. It is also required to specify the type, color, maker and serial number.
 - ・ If quantities are shown in (), it indicates that the parts are components of the higher assembly or unit.
 - ・ If "N" is indicated in the quantity column, it indicates that the parts are to be used as required.
- When a part is changed or modified:
 - ・ The applicable serial number is shown in the Remarks column. If the Remarks column is left blank, the parts are applicable to the initial unit.
 - ・ If a part number is shown in the Part Name column, it shows that the part has been integrated into that number.

● Make-up of the part number

(Example) General parts



(Example) Bolts, nuts and other standard parts



● Interchangeability

Interchangeability	
Single	Set
○	
X	
X	
X	

1. ○ (interchangeable): Kit parts can be used in base machine.
X (not interchangeable): Parts may be assembled in the base machine, but such installation will affect the performance of the base machine adversely.
2. Single: A normal part is interchangeable with the corresponding kit part.
3. A set of normal parts are interchangeable with the corresponding kit parts (indicated by lines).

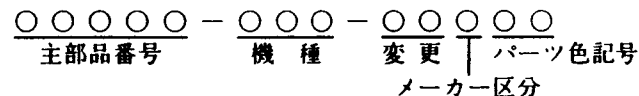
* If the Reference Number is accompanied by a dot "." on the left side, the part is HRC exclusive part.
If there is no dot ".", the part is Honda part.

パーツリストのご使用について

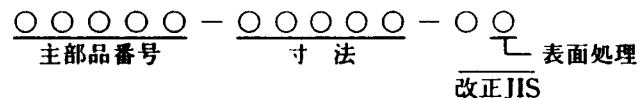
- 部品の注文、修理などの資料としてお使いください。
 - ・ 販売対象部品を収録してあります。
 - ・ 部品注文は部品番号でご連絡ください。
(部品は変更される場合がありますのでタイプ・色・メーカー名・号機を必要に応じて一緒にご連絡ください。)
 - ・ 使用個数に () がつけられている部品は構成部品です。
 - ・ 使用個数が "N" と示されている部品は必要に応じて選択して使用する部品です。
- 部品に変更があったとき
 - ・ Remarksに号機が記載されます。号機が記載されていない部品は初号機から使用しています。
 - ・ 部品名欄に部品番号が記載されているものはその部品番号に統一されたことを示します。

● 部品番号の構成

<例> 一般部品



<例> ボルト・ナット・その他の標準部品



● 互換性の見方

Interchangeability	
Single	Set
○	
X	
X	
X	

Interchangeability (互換性) については

1. 基本になるベース車のパーツに対し、キットのパーツが組込めるものを互換性あり(○)印で表示、組込めないものを互換性なし(X)として表示しています。尚、組込みは問題なくても性能上著しく変わってしまう場合は互換性なしとしています。
2. Single(単品): ベース車のパーツとキットのパーツ単品で組込可能かどうか。
3. Set(セット): セットで組付が必要な場合はその部品を線で結んでおります。

* Ref. No. の左側に

- ・ 印のついている部品はHRC専用部品です。HRCサービスショップにご注文するか又は、お買い求めのHRC販売店にご相談下さい。
- ・ 印のついていない部品は本田技研工業(株)の量産部品を流用しています。HRCサービスショップまたは最寄りのホンダ二輪販売店でお求め下さい。

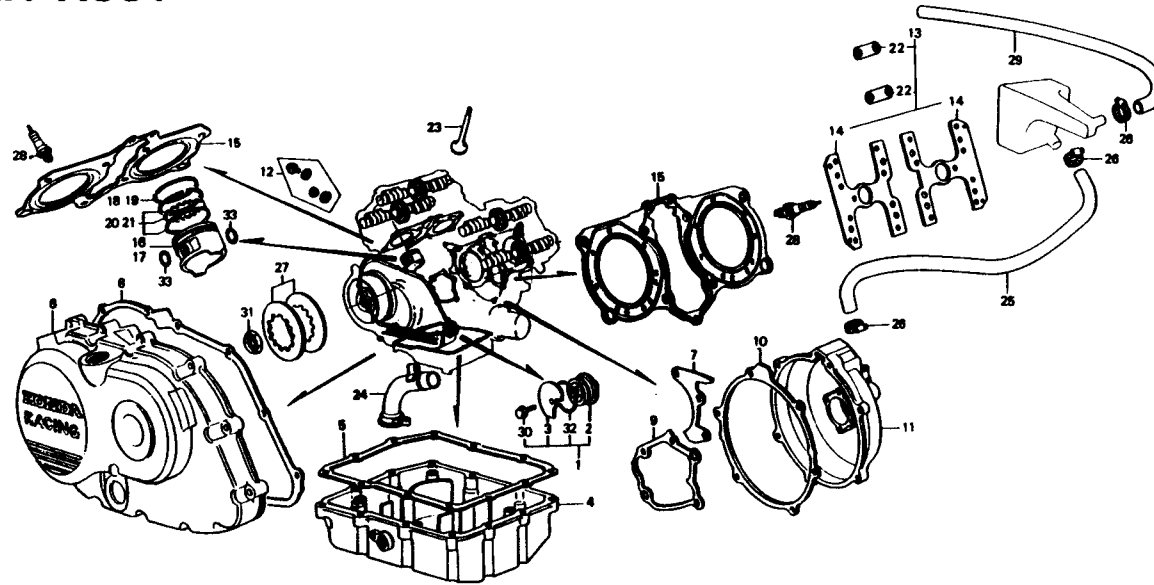
PARTS LIST

CONTENTS

- INSTRUCTION FOR USE OF PARTS LIST 2-2
- POWER UP KIT ASSY 06130-NL0-820 2-3
- CARBURETOR SET 06160-NL0-000 2-5
- TRANSMISSION SET 06230-NL0-810 2-6
- CARB. SETTING PARTS SET 16020-NL0-820 2-7
- EXHAUST PIPE ASSY. SET 06180-NL0-820 2-8
- RADIATOR UPPER SET 06190-NL0-000 2-9
- RADIATOR LOWER SET 06195-NL0-810 2-10
- ELECTRIC SET 06320-NL0-010 2-11
- DRIVEN SPROCKET SET 06412-NL0-820 2-12
- FINAL DRIVEN SET 06413-NL0-840 2-13
- CARBURETOR DUCT SET 06508-NL0-010 2-14
- REAR CUSHION SET 06524-NL0-820 2-15
- HANDLE SET (15°) 06531-NL0-000 2-16
- HANDLE SET (10°) 06532-NL0-810
TOP BRIDGE · STEERING STEM 2-17
- STEERING DAMPER SET 06537-NL0-010 2-18
- FRONT WHEEL · REAR WHEEL 2-19
- R/L FRONT CALIPER ASSY 2-20
- R/L FRONT FORK ASSY 2-21
- REAR AXLE · REAR FORK 2-23
- '89-VFR750R RACING KIT PART NO. INDEX 2-24

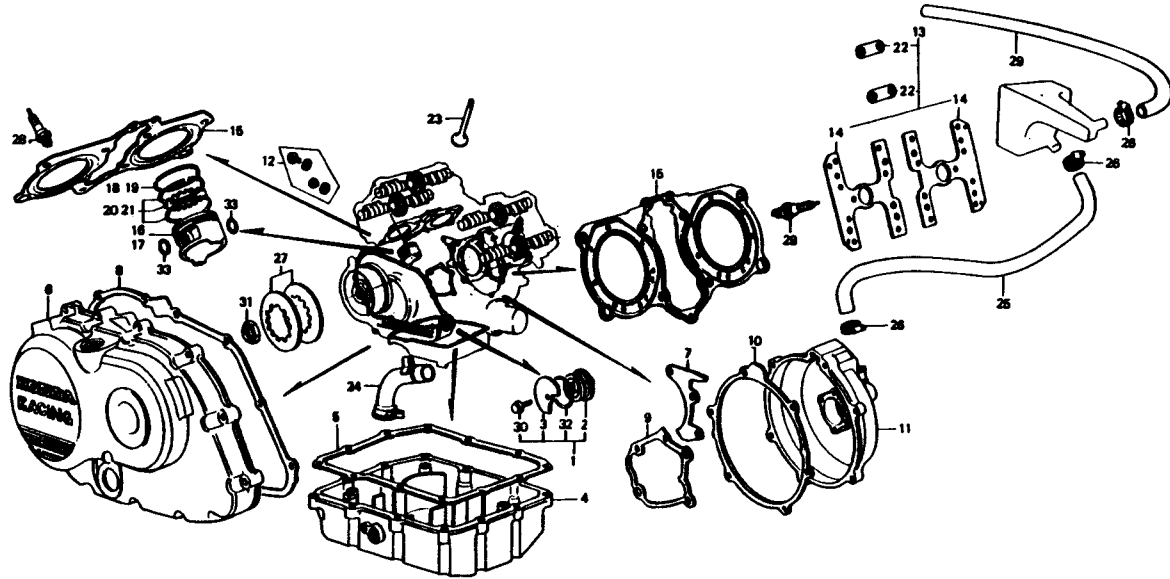


① POWER UP KIT ASSY 06130-NL0-820



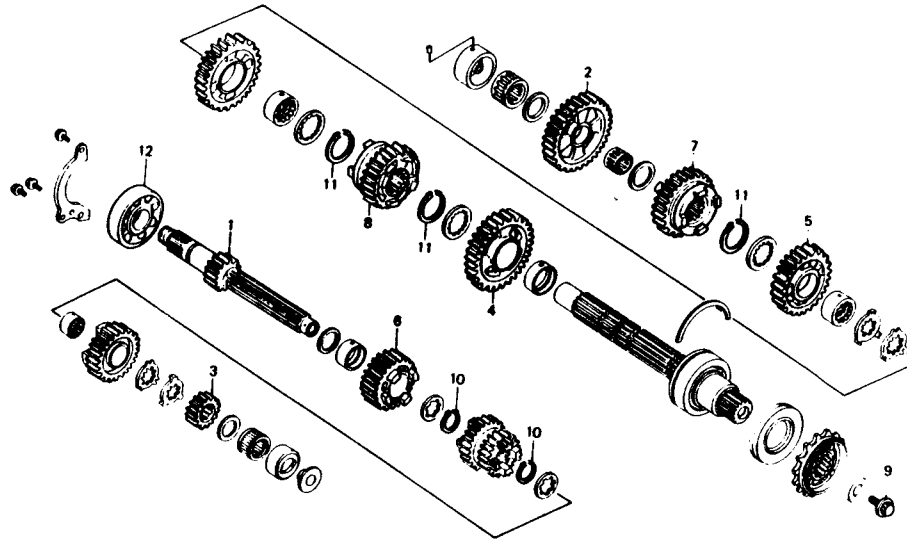
Ref. No.	Part No.	Description		Reqd. No.				Interchangeability		Remarks
				TTF-1	S/B	E	OPT.	Single	Set	
• 20	13141-NL0-821	RING, piston oil	4	①	①	①		X		Not included in ASSY.
• 21	13143-NL0-821	RING, piston oil 70.4	4				○	X		
• 22	14407-NL0-820	SHIM, gear train 0.2	(4)				○	X		
• 23	14711-NL0-820	VALVE, inlet	8	①	①	①		○		
• 24	15151-NL0-820	PIPE, oil strainer	1	①	①	①		X		
• 25	17358-NL0-820	HOSE, breather return	1	①	①	①		X		
• 26	19505-KS6-700	CLAMP A, water hose	3	①	①	①		X		Not included in ASSY. STD. (Not included in ASSY.) Not included in ASSY.
• 27	22441-NL0-000	SPRING SET, clutch	1	①	①	①		○		
• 28	31910-NF2-005	PLUG, spark, R017-10	4				○	○		
•	31911-NF2-005	PLUG, spark, R017-11	4				○	○		
•	31912-NF2-005	PLUG, spark, R017-12	4				○	○		
• 29	55220-NF8-000	HOSE, oil breather	1	①	①	①		X		Not included in ASSY.
• 30	90005-ND6-000	BOLT, flange, 6 x 14	(1)				○	X		
• 31	90201-MB0-770	NUT, lock, 22 mm	1	①	①	①		○		Not included in ASSY.
• 32	91308-ND6-000	O-RING, 42.5 x 2	(1)				○	X		
• 33	94601-17000	CLIP, piston pin, 17 mm	8	①	①	①		○		

① POWER UP KIT ASSY
06130-NL0-820



Ref. No.	Part No.	Description		Reqd. No.				Interchangeability		Remarks
				TTF-1	S/B	E	OPT.	Single	Set	
• 1	11202-NF1-000	PLUG-SET, sealing	1				○	○	Not included in ASSY. Not included in ASSY. Not included in ASSY.	
• 2	11203-NF1-000	PLUG, sealing	(1)				○	X		
• 3	11204-ND6-000	PLATE, sealing plug	(1)				○	X		
• 4	11210-NL0-820	OIL PAN	1	①	①	①		X		
• 5	11315-ML7-000	GASKET, oil pan	1	①	①	①		○		
• 6	11330-NL0-810	COVER COMP., R.	1				○	○	Not included in ASSY.	
• 7	11343-ML7-000	GASKET, L. cover	1	①	①	①		○		
• 8	11394-ML7-000	GASKET, R. cover	1	①	①	①		○		
• 9	11632-ML7-000	GASKET, shift cover	1	①	①	①		○		
• 10	11636-MR7-000	GASKET, ACG. cover	1	①	①	①		○		
• 11	11641-NL0-820	COVER COMP., ACG.	1	①	①	①		X	Not included in ASSY.	
• 12	12207-NL0-820	PLUG-SET, breather	1	①	①	①		X		
• 13	12225-NL0-820	SHIM-SET, head	1				○	X		
• 14	12227-NL0-820	SHIM, cam holder 0.2	(4)				○	X		
• 15	12251-MR7-003	GASKET, cylinder head	2	①	①	①		○		
• 16	13101-NL0-820	PISTON	4	①	①	①		X	Not included in ASSY.	
• 17	13102-NL0-820	PISTON 70.4	4				○	X		
• 18	13121-NL0-821	RING, piston top	4	①	①	①		X		
• 19	13123-NL0-821	RING, piston top 70.4	4				○	X		

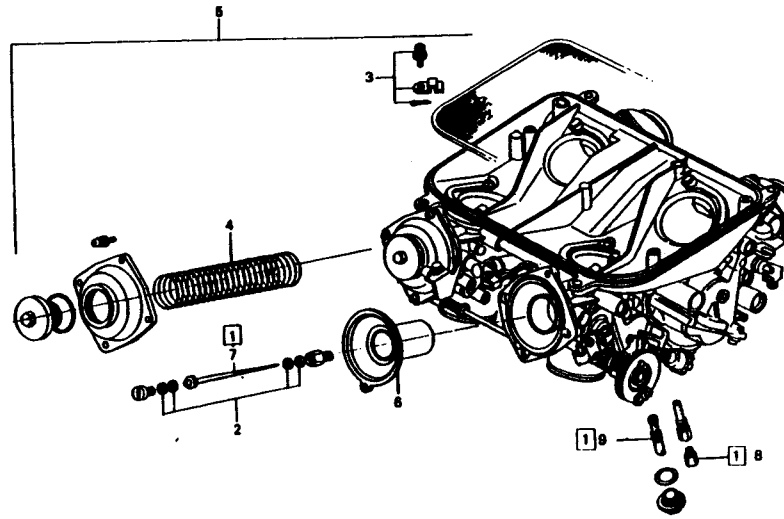
① TRANSMISSION SET
06230-NL0-810



Ref. No.	Part No.	Description		Reqd. No.				Interchangeability		Remarks
				TTF-1	S/B	E	OPT.	Single	Set	
• 1	23211-NL0-810	MAINSHAFT (17T)	1				①	X		
• 2	23421-NL0-810	GEAR, C-1 (38T)	1				①	X		
• 3	23431-NL0-810	GEAR, M-2 (17T)	1				①	X		
• 4	23441-NL0-810	GEAR, C-2 (32T)	1				①	X		
• 5	23481-NL0-810	GEAR, C-4 (32T)	1				①	X		
• 6	23491-NL0-810	GEAR, M-5 (22T)	1				①	X		
• 7	23501-NL0-810	GEAR, C-5 (28T)	1				①	X		
• 8	23521-NL0-810	GEAR, C-6 (30T)	1				①	X		
• 9	90004-492-010	SPECIAL BOLT, flange, 10 x 22	1				①	○		
10	90601-107-000	CIR-CLIP, 25 mm	2				①	○		
11	90603-MN4-000	CIR-CLIP, 28 mm	3				①	○		
• 12	91002-NF1-000	BEARING, 6305 JR2	1				①	○		

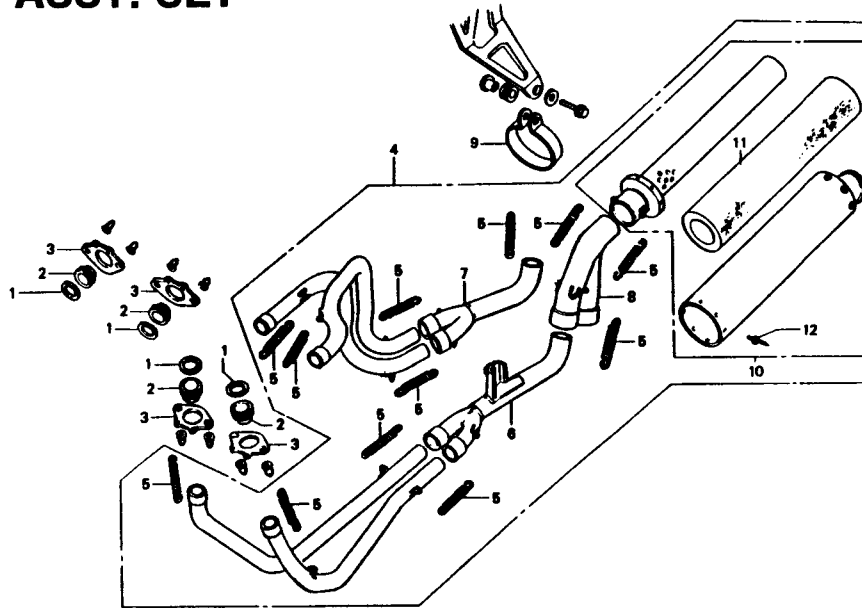
① CARBURETOR SET

06160-NL0-000



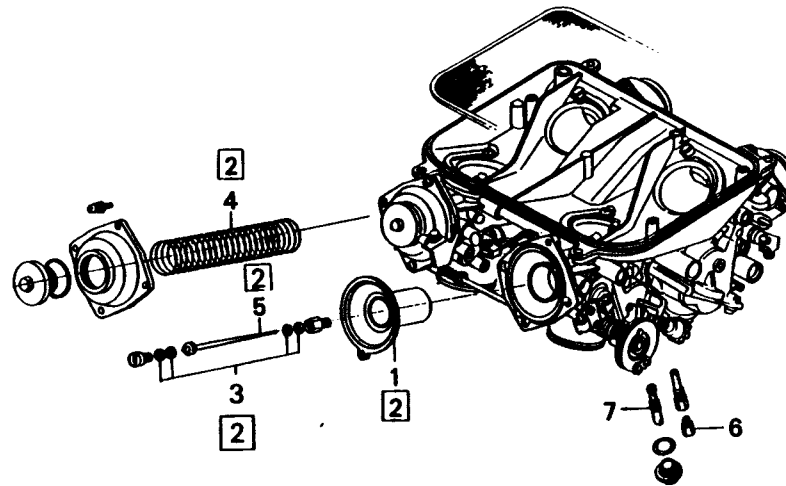
Ref. No.	Part No.	Description		Reqd. No.				Interchangeability		Remarks
				TTF-1	S/B	E	OPT.	Single	Set	
• ①	16025-NL0-004	PARTS-SET, carburetor setting	1	①		①		X		
• 2	16040-NL0-014	SHIM-SET	(4)	①		①		X		
• 3	16047-NL0-004	PLATE-SET, set	(4)	①		①		○		
• 4	16050-NF1-811	SPRING, compression coil	(4)	①		①		X		
• 5	16100-NL0-004	CARBURETOR ASSY.	1	①		①		○		
• 6	16111-NL0-004	PISTON COMP., vacuum	(4)	①		①		X		
• 7	16151-NL0-004	NEEDLE, jet, N2345	(4)	①		①		X		STD.
•	16152-NL0-004	NEEDLE, jet, N2346	(4)	①		①		X		
•	16153-NL0-004	NEEDLE, jet, N2347	(4)	①		①		X		
8	99101-357-1450	JET, main, #145	(4)	①		①		○		
	99101-357-1480	JET, main, #148	(4)	①		①		○		
	99101-357-1500	JET, main, #150	(4)	①		①		○		
	99101-357-1520	JET, main, #152	(4)	①		①		○		STD.
	99101-357-1550	JET, main, #155	(4)	①		①		○		
	99101-357-1580	JET, main, #158	(4)	①		①		○		
	99101-357-1600	JET, main, #160	(4)	①		①		○		
9	99103-437-0420	JET, slow, #42	(4)	①		①		○		
	99103-437-0450	JET, slow, #45	(4)	①		①		○		STD.
	99103-437-0480	JET, slow, #48	(4)	①		①		○		

① EXHAUST PIPE ASSY. SET
06180-NL0-820



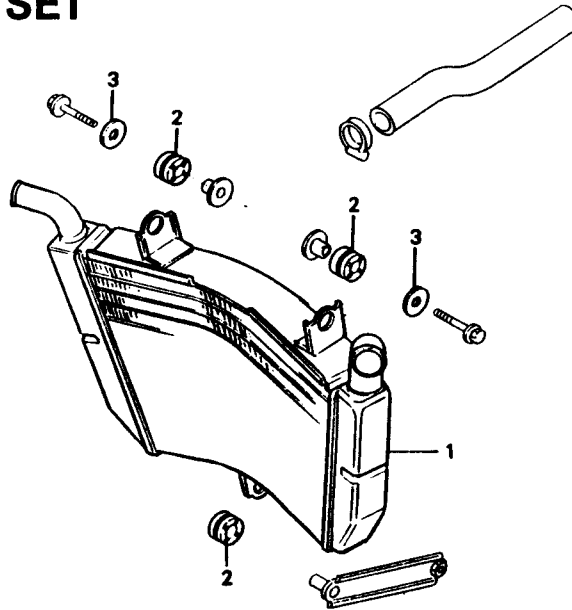
Ref. No.	Part No.	Description		Reqd. No.				Interchangeability		Remarks
				TTF-1	S/B	E	OPT.	Single	Set	
• 1	18291-NL0-000	GASKET, exhaust pipe collar	4	①	①	①		X		
• 2	18292-NL0-000	COLLAR, exhaust	4	①	①	①		X		
• 3	18293-NL0-000	FLANGE, exhaust	4	①	①	①		X		
• 4	18300-NL0-820	PIPE ASSY, exhaust	1	①	①	①		X		
• 5	18332-KS6-000	SPRING, exhaust pipe	(12)	①	①	①		X		
• 6	18350-NL0-820	PIPE, front exhaust middle	(1)	①	①	①		X		
• 7	18360-NL0-820	PIPE, rear exhaust middle	(1)	①	①	①		X		
• 8	18370-NL0-820	PIPE, exhaust tail	(1)	①	①	①		X		
• 9	18371-NL0-000	BAND, muffler stay, 97	1	①	①	①		X		
• 10	18380-NL0-820	MUFFLER COMP.	(1)	①	①	①		X		
• 11	18385-NL0-820	MAT, glass	(1)	①	①	①		X		
• 12	91081-NF1-700	RIVET, 4.8 x 7.6	(8)	①	①	①		X		

① CAB. SETTING PARTS SET 16020-NL0-820



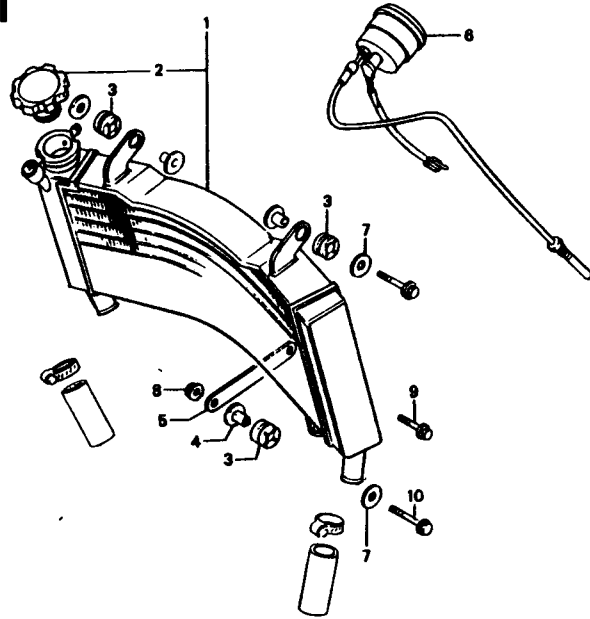
Ref. No.	Part No.	Description		Reqd. No.				Interchangeability		Remarks
				TTF-1	S/B	E	OPT.	Single	Set	
• 1	16021-NL0-820	VACUUM PISTON COMP.	(4)		①			X		STD.
• 2	16022-NL0-820	VACUUM PISTON COMP., KIT	1		①			○		
• 3	16040-NL0-014	SHIM-SET	(4)		①			X		
• 4	16050-NF1-811	SPRING, compression coil	(4)		①			X		
• 5	16151-NL0-004	NEEDLE, jet, N2345	(4)		①			X		
•	16152-NL0-004	NEEDLE, jet, N2346	(4)		①			X		
•	16153-NL0-004	NEEDLE, jet, N2347	(4)		①			X		
6	99101-357-1420	JET, main, #142	4		①			○		STD.
	99101-357-1450	JET, main, #145	4		①			○		
	99101-357-1480	JET, main, #148	4		①			○		
	99101-357-1500	JET, main, #150	4		①			○		
	99101-357-1520	JET, main, #152	4		①			○		
	99101-357-1550	JET, main, #155	4		①			○		
	99101-357-1580	JET, main, #158	4		①			○		
7	99103-437-0400	JET, slow, #40	4		①			○		STD.
	99103-437-0420	JET, slow, #42	4		①			○		
	99103-437-0450	JET, slow, #45	4		①			○		

① RADIATOR LOWER SET
06195-NL0-810



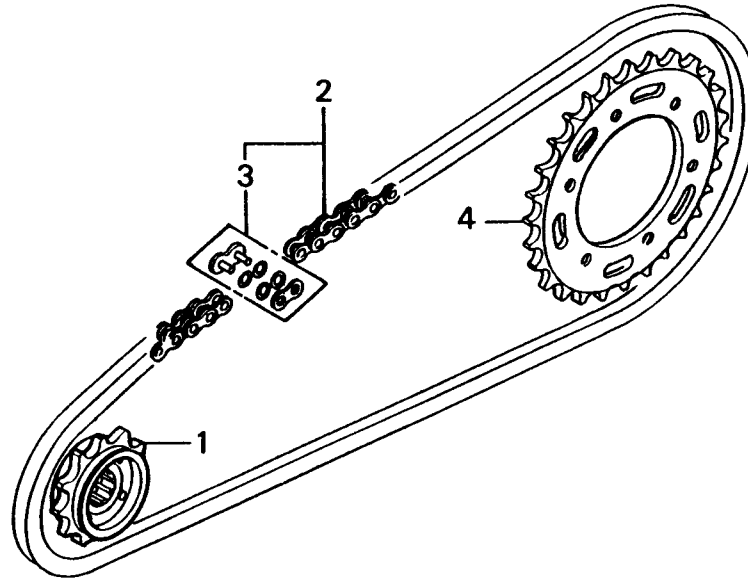
Ref. No.	Part No.	Description		Reqd. No.				Interchangeability		Remarks
				TTF-1	S/B	E	OPT.	Single	Set	
• 1	19050-NL0-811	RADIATOR COMP., lower	1	①	①	①		X		
2	19051-KA3-830	RUBBER, radiator mount	3	①	①	①		○		
3	90403-KA3-830	WASHER, radiator mount	2	①	①	①		X		

① RADIATOR UPPER SET
06190-NL0-000



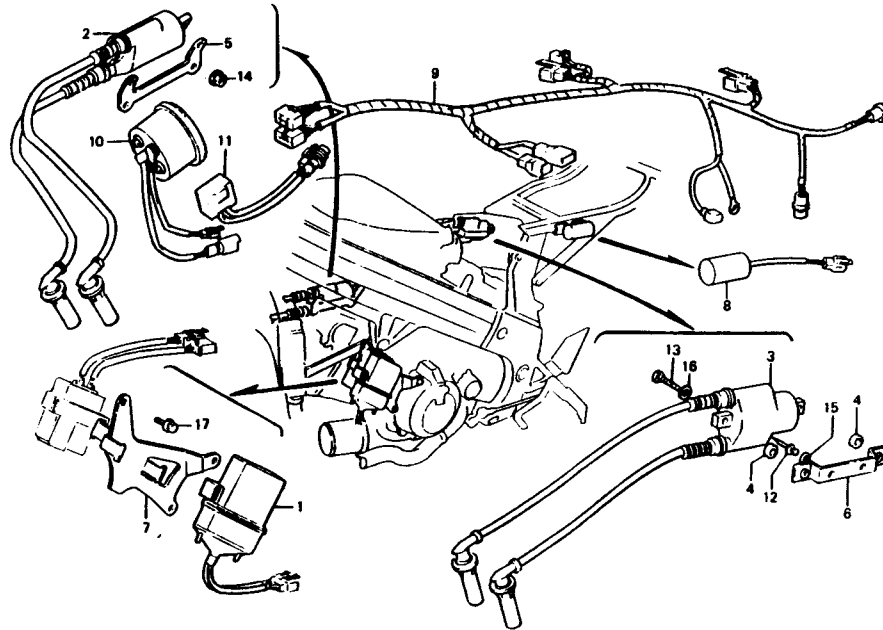
Ref. No.	Part No.	Description	Reqd. No.				Interchangeability		Remarks
			TTF-1	S/B	E	OPT.	Single	Set	
• 1	19010-NL0-003	RADIATOR COMP., upper	1	①	①	①		X	
• 2	19037-NL0-003	CAP COMP., filler	(1)	①	①	①		X	
• 3	19051-KA3-830	RUBBER, radiator mount	3	①	①	①		○	
• 4	19052-KA3-830	COLLAR, radiator mount	1	①	①	①		X	
• 5	19130-NL0-000	STAY, upper radiator	1	①	①	①		X	
• 6	37460-NC9-900	METER ASSY., water temp	1	①	①	①		X	
• 7	90403-KA3-830	WASHER, radiator mount	3	①	①	①		X	
• 8	94050-06080	NUT, flange, 6 mm	1	①	①	①		X	
• 9	95701-06018-00	BOLT, flange, 6 x 18	1	①	①	①		X	
• 10	96001-06025-00	BOLT, flange, SH, 6 x 25	1	①	①	①		○	

① DRIVEN SPROCKET SET
06412-NL0-820



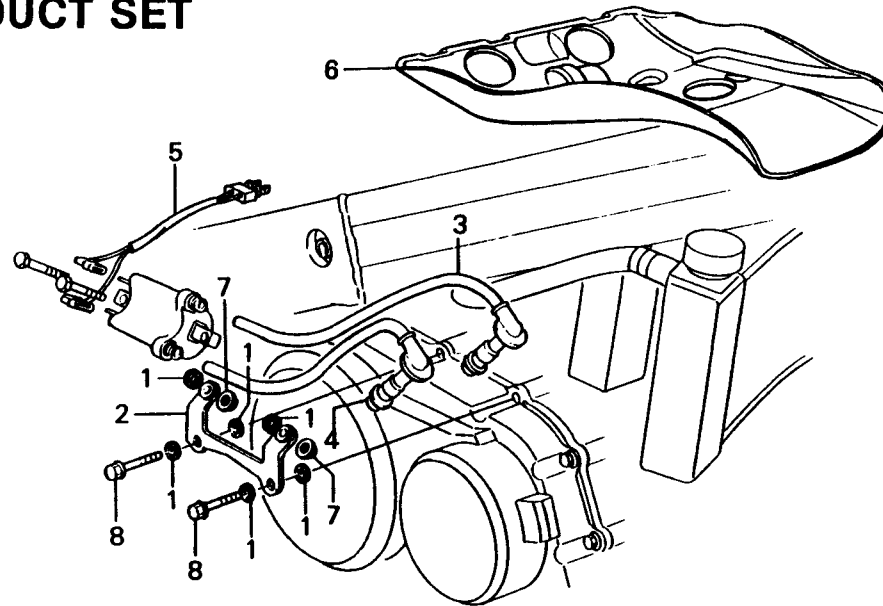
Ref. No.	Part No.	Description	Reqd. No.				Interchangeability		Remarks
			TTF-1	S/B	E	OPT.	Single	Set	
• 1	23802-NL0-820	SPROCKET, drive. 15T (525)	1		①		○		Not included in set. Not included in set.
• 2	40530-NL0-305	CHAIN, drive (RK GB525 RO x 108LJ-F)	1			○	○		
• 3	40535-NL0-305	JOINT, drive chain (RK GB525RO)	(1)			○	○		
• 4	41237-NL0-821	SPROCKET, final driven, 37T	1		①		○		
•	41238-NL0-003	SPROCKET, final driven, 38T	1		①		○		
•	41239-NL0-003	SPROCKET, final driven, 39T	1		①		○		
•	41241-NL0-003	SPROCKET, final driven, 41T	1		①		○		
•	41242-NL0-003	SPROCKET, final driven, 42T	1		①		○		
•	41243-NL0-003	SPROCKET, final driven, 43T	1		①		○		

① ELECTRIC SET
06320-NL0-010



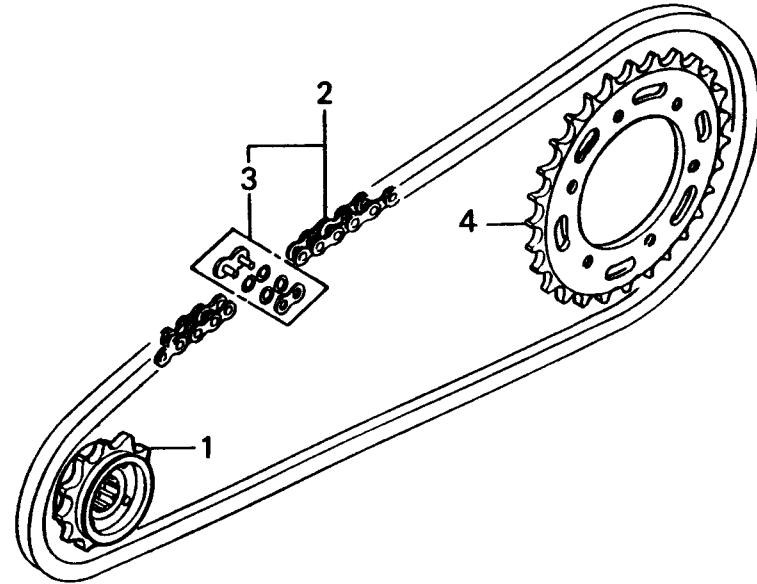
Ref. No.	Part No.	Description		Reqd. No.				Interchangeability		Remarks
				TTF-1	S/B	E	OPT.	Single	Set	
• 1	30400-NL0-000	UNIT COMP., CDI control	1	①	①	①		X		Not included in set.
• 2	30501-NL0-000	COIL ASSY., ignition 1	1	①	①	①		X		
• 3	30502-NL0-000	COIL ASSY., ignition 2	1	①	①	①		X		
• 4	30507-107-000	COLLAR, ignition coil set	2	①	①	①		X		
• 5	30511-NL0-010	STAY, front ignition coil	1	①	①	①		X		
• 6	30512-NL0-000	STAY, rear ignition coil	1	①	①	①		X		
• 7	31520-NL0-000	STAY, CDI unit	1	①	①	①		X		
• 8	31700-NL0-000	UNIT COMP., condenser	1	①	①	①		X		
• 9	32100-NL0-000	HARNESS, wire T.T.	1	①	①	①		X		
• 10	32100-NL0-810	HARNESS, wire	1	①	①	①	○	X		
• 10	37250-NC9-000	TACHOMETER ASSY.	1	①	①	①		X		
• 11	37255-NL0-008	CONVERTER, tachometer	1	①	①	①		X		
• 12	91082-NL0-000	RIVET, 4 x 14	2	①	①	①		X		
13	92101-05032-0A	BOLT, hex., 5 x 32	2	①	①	①		X		
14	94050-06080	NUT, flange, 6 mm	2	①	①	①		X		
15	94101-04000	WASHER, plain 4 mm	2	①	①	①		X		
16	94101-05000	WASHER, plain 5 mm	2	①	①	①		X		
17	95701-06040-00	BOLT, flange, 6 x 40	1	①	①	①		X		

① CARBURETOR DUCT SET
06508-NL0-010



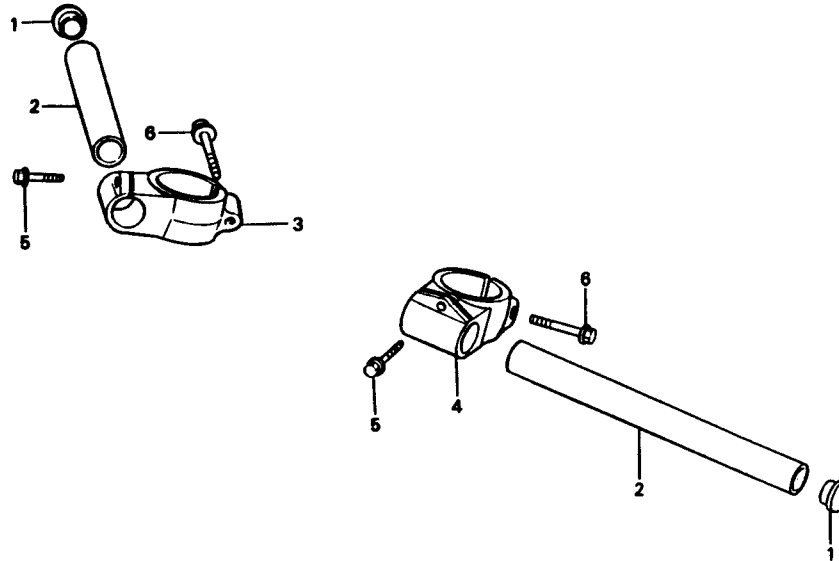
Ref. No.	Part No.	Description		Reqd. No.				Interchangeability		Remarks
				TTF-1	S/B	E	OPT.	Single	Set	
1	18293-MN5-650	PACKING, protector	6	①	①	①		X		
• 2	30511-NL0-010	STAY, front ignition coil	1	①	①	①		X		
• 3	30752-NL0-000	CAP ASSY., high tension 2	1	①	①	①		X		
• 4	30754-NL0-000	CAP ASSY., high tension 4	1	①	①	①		X		
• 5	32101-NL0-000	SUB HARNESS, ignition	1	①	①	①		X		
• 6	50805-NL0-000	DUCT, carburetor	1	①	①	①		X		
7	94050-06080	NUT, flange, 6 mm	2	①	①	①		X		
8	96001-06032-07	BOLT, flange, SH, 6 x 32	2	①	①	①		X		

① FINAL DRIVEN SET
06413-NL0-840



Ref. No.	Part No.	Description		Reqd. No.				Interchangeability		Remarks
				TTF-1	S/B	E	OPT.	Single	Set	
• 1	23801-NL0-810	SPROCKET, drive, 16T (520)	1	①	①			X		
•	23802-NL0-840	SPROCKET, drive, 15T (520)	1	①	①			X		
• 2	40530-NL0-811	CHAIN, drive (RK GB520 ROZI x 108LJF)	1					X		Not included in set.
• 3	40535-NL0-811	JOINT, drive chain (RK GB520ROZI)	(1)				○	X		Not included in set.
• 4	41237-NL0-841	SPROCKET, final driven, 37T	1	①	①			X		
•	41238-NL0-811	SPROCKET, final driven, 38T	1	①	①			X		
•	41239-NL0-811	SPROCKET, final driven, 39T	1	①	①			X		
•	41240-NL0-811	SPROCKET, final driven, 40T	1	①	①			X		
•	41241-NL0-811	SPROCKET, final driven, 41T	1	①	①			X		
•	41242-NL0-811	SPROCKET, final driven, 42T	1	①	①			X		
•	41243-NL0-811	SPROCKET, final driven, 43T	1				○	X		Not included in set.

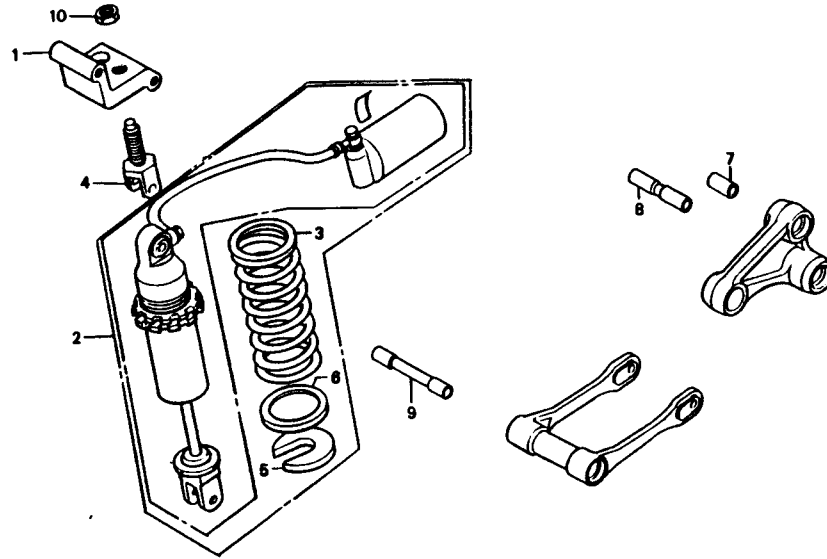
① HANDLE SET (15°)
06531-NLO-000



Ref. No.	Part No.	Description	Reqd. No.				Interchangeability		Remarks
			TTF-1	S/B	E	OPT.	Single	Set	
1	53105-300-970	CAP, handle pipe	2				①	X	
• 2	53111-ND5-760	PIPE, handle	2				①	X	
• 3	53113-NF1-810	HOLDER, R. handle, 15°	1				①	X	
• 4	53123-NF1-810	HOLDER, L. handle, 15°	1				①	X	
5	96001-06020-00	BOLT, flange, SH, 6 x 20	2				①	X	
6	96300-08028-08	BOLT, flange, DR, 8 x 28	2				①	X	

① REAR CUSHION SET

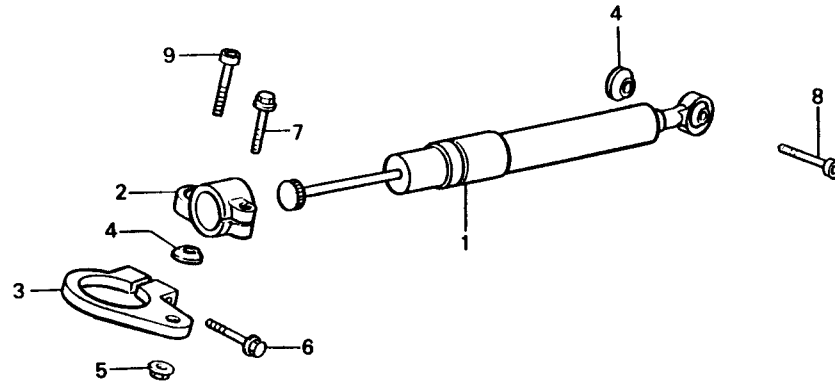
06524-NL0-820



Ref. No.	Part No.	Description		Reqd. No.				Interchangeability		Remarks
				TTF-1	S/B	E	OPT.	Single	Set	
• 1	50231-NL0-000	BASE, rear cushion mount	1	①	①	①		X		Not included in set.
• 2	52400-NL0-821	CUSHION ASSY, rear	1	①	①	①		X		
• 3	52402-NL0-821	SPRING, rear cushion, 16	1				○	X		
• 3	52401-MR7-003	SPRING, rear cushion, 18	(1)	①	①	①		X		
• 3	52404-NL0-821	SPRING, rear cushion, 18	1				○	X		
• 4	52415-NL0-000	BOLT, rear cushion adjust	1	①	①	①		X		
5	52424-MA0-003	STOPPER, spring seat	(1)	①	①	①		X		
6	52459-964-003	SEAT, spring	(1)	①	①	①		X		
• 7	52462-NL0-000	COLLAR, cushion arm	1	①	①	①		X		
• 8	52463-NL0-000	COLLAR, cushion arm	1	①	①	①		X		
• 9	52472-NL0-000	COLLAR, con-rod pivot	1	①	①	①		X		
10	94031-18000	NUT, hex. 18 mm	1	①	①	①		X		

① STEERING DAMPER SET

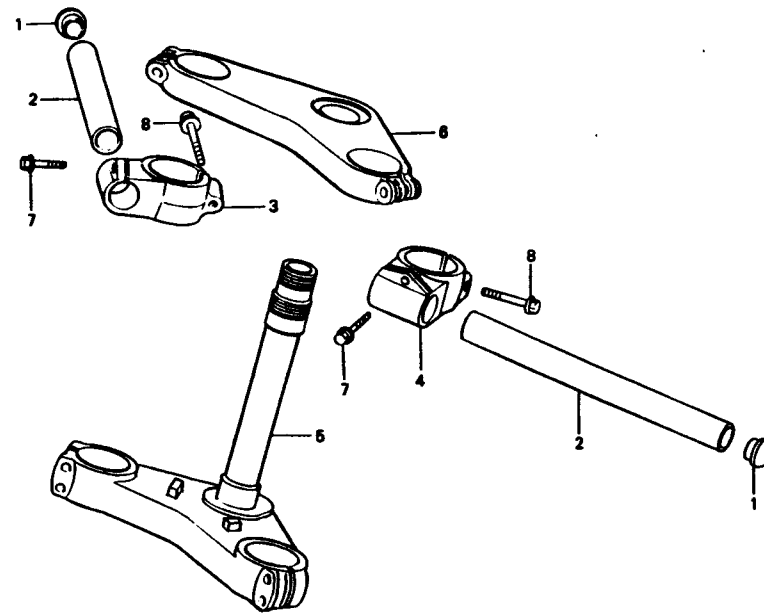
06537-NL0-010



Ref. No.	Part No.	Description		Reqd. No.				Interchangeability		Remarks
				TTF-1	S/B	E	OPT.	Single	Set	
• 1	53700-NL0-003	DAMPER ASSY., steering	1	①	①	①		X		
• 2	53705-NL0-000	HOLDER ASSY., steering damper	1	①	①	①		X		
• 3	53710-NL0-010	STAY, steering damper	1	①	①	①		X		
• 4	53713-NC8-000	SPACER, steering damper	2	①	①	①		X		
• 5	90309-428-731	NUT, flange, 8 mm	1	①	①	①		X		
6	96001-06032-00	BOLT, flange, SH, 6 x 32	1	①	①	①		X		
7	96001-06028-00	BOLT, flange, SH, 6 x 28	1	①	①	①		X		
8	96700-08032-10	BOLT, socket, 8 x 32	1	①	①	①		X		
9	96700-08035-10	BOLT, socket, 8 x 35	1	①	①	①		X		

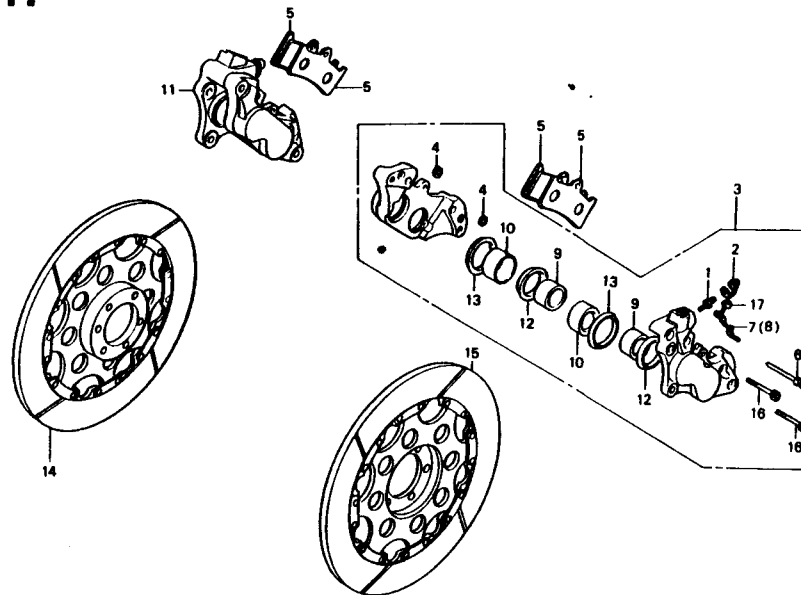
① HANDLE SET (10°)
06532-NL0-810

○ TOP BRIDGE · STEERING STEM



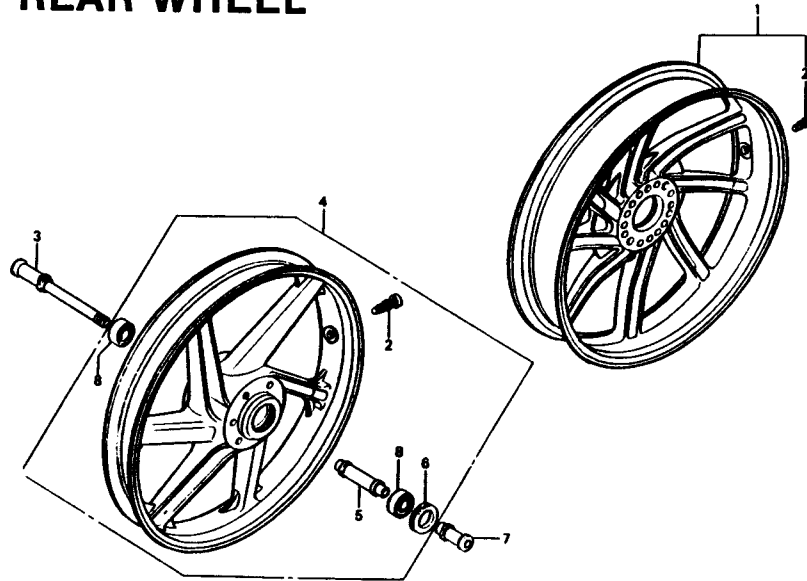
Ref. No.	Part No.	Description		Reqd. No.				Interchangeability		Remarks
				TTF-1	S/B	E	OPT.	Single	Set	
1	53105-300-970	CAP, handle pipe	2				①	X		
• 2	53111-ND5-760	PIPE, handle	2				①	X		
• 3	53112-NF1-810	HOLDER, R. handle, 10°	1				①	X		
• 4	53122-NF1-810	HOLDER, L. handle, 10°	1				①	X		
• 5	53210-NL0-810	STEM COMP., steering, 37.5 mm	1				○	X		Not included in set.
•	53211-NL0-810	STEM COMP., steering, 42.5 mm	1				○	X		Not included in set.
• 6	53234-NL0-810	BRIDGE, fork top, 37.5 mm	1				○	X		Not included in set.
•	53235-NL0-810	BRIDGE, fork top, 42.5 mm	1				○	X		Not included in set.
7	96001-06020-00	BOLT, flange, SH, 6 x 20	2				①	X		
8	96300-08028-08	BOLT, flange, DR, 8 x 28	2				①	X		

○ R/L FRONT CALIPER ASSY.



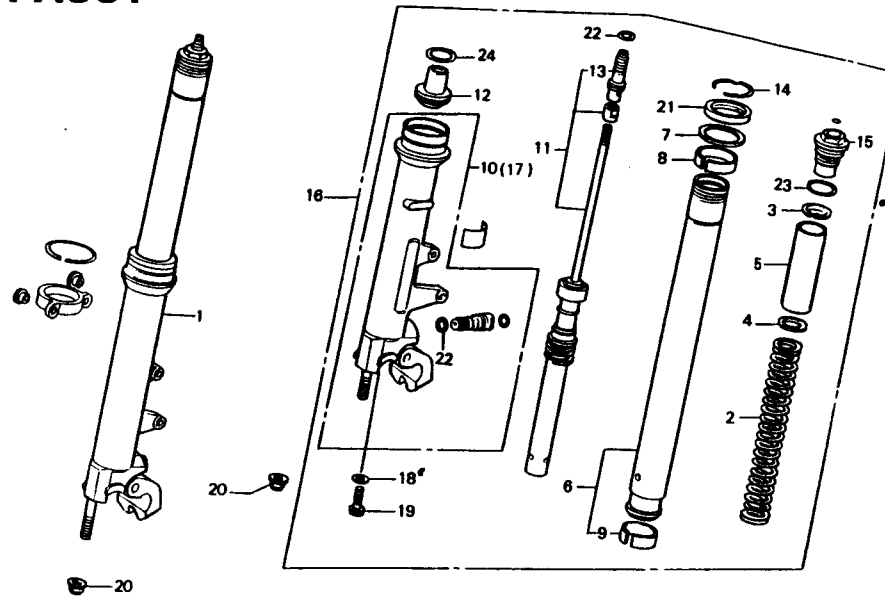
Ref. No.	Part No.	Description		Reqd. No.				Interchangeability		Remarks
				TTF-1	S/B	E	OPT.	Single	Set	
1	43352-568-003	SCREW, bleeder	(2)	○	○	○		○		
2	43353-461-771	CAP, bleeder	(2)	○	○	○		○		
• 3	45100-NL0-821	CALIPER ASSY, L. front	1	○	○	○		X		
4	45103-MR7-006	SEAL, joint	(4)	○	○	○		○		
• 5	45105-NL0-821	PAD COMP, front (C15)	4				○	X		
•	45105-NL0-810	PAD COMP, front (C22)	4				○	X		
6	45109-MR7-006	PIN, hanger	(2)	○	○	○		○		
7	45113-MR7-006	SPRING, L. hanger pin	(1)	○	○	○		○		
8	45114-MR7-006	SPRING, R. hanger pin	(1)	○	○	○		○		
• 9	45117-NL0-003	PISTON, 30 (ø30.23)	(4)	○	○	○		X		
• 10	45118-NL0-003	PISTON, 32 (ø32.03)	(4)	○	○	○		X		
• 11	45200-NL0-821	CALIPER ASSY, R. front	1	○	○	○		X		
12	45209-166-006	SEAL, piston	(4)	○	○	○		○		
13	45209-MA7-006	SEAL, piston	(4)	○	○	○		○		
• 14	45250-NF7-000	DISK COMP, R. front	1	○	○	○		X		
• 15	45260-NF7-000	DISK COMP, L. front	1	○	○	○		X		
16	90102-MR7-006	BOLT, socket, 8 x 45	(8)	○	○	○		○		
17	90124-MR7-006	SCREW-WASHER, 4 x 8	(2)	○	○	○		○		

○ FRONT WHEEL · REAR WHEEL



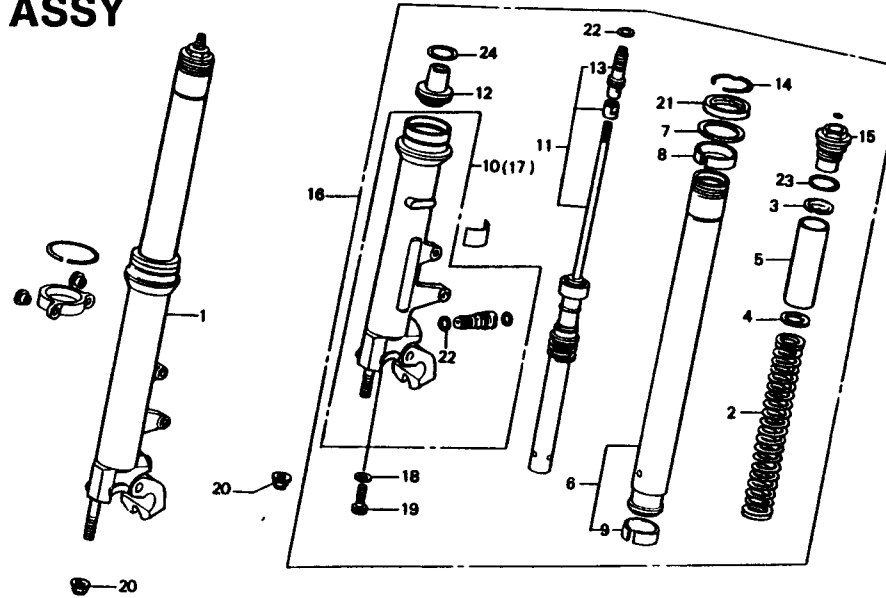
Ref. No.	Part No.	Description		Reqd. No.				Interchangeability		Remarks
				TTF-1	S/B	E	OPT.	Single	Set	
• 1	42605-NL0-810	WHEEL ASSY., rear, 4.00-18	1				○	○		
•	42606-NL0-810	WHEEL ASSY., rear, 5.50-18	1				○			
•	42607-NL0-810	WHEEL ASSY., rear, 5.50-17	1				○			
• 2	42704-NL0-810	VALVE, wheel, AL-D	(2)				○	○		
• 3	44301-NL0-810	AXLE, front wheel	1				○	○		
• 4	44600-NL0-810	WHEEL ASSY., front, 3.00-17	1				○	X		
•	44601-NL0-810	WHEEL ASSY., front, 3.25-17	1				○	X		
•	44602-NL0-810	WHEEL ASSY., front, 3.50-17	1				○	X		
• 5	44620-NC8-000	COLLAR, front wheel distance	(1)				○	X		
• 6	44622-NL0-810	RETAINER, front wheel	(1)				○	X		
• 7	90305-NL0-810	NUT, front axle	1				○	X		
• 8	91056-NC8-000	BEARING, ball, radial, 6022UU	(2)				○	X		

○ R/L FRONT FORK ASSY



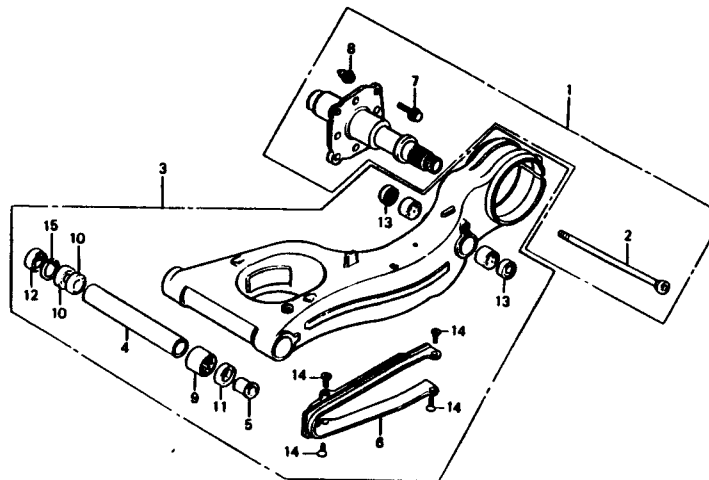
Ref. No.	Part No.	Description		Reqd. No.				Interchangeability		Remarks
				TTF-1	S/B	E	OPT.	Single	Set	
14	51447-KA4-711	RING, oil seal stop	(2)	○	○	○		○		
• 15	51454-NL0-003	BOLT, front fork	(2)	○	○	○		X		
• 16	51500-NL0-821	FORK ASSY, L, front	1	○	○	○		X		
• 17	51521-NL0-003	CASE COMP, L, bottom	(1)	○	○	○		X		
18	52442-KA3-711	WASHER, special, 10 mm	(2)	○	○	○		○		
19	90126-MR7-003	BOLT, socket, 10 x 35	(2)	○	○	○		○		
• 20	90309-NL0-003	NUT, flange, 12 mm	(2)	○	○	○		○		
21	91255-KA4-831	OIL-SEAL, 43 x 54 x 11.5	(2)	○	○	○		○		
22	91311-MR7-003	O-RING, 13.8 x 2.4	(4)	○	○	○		○		
23	91356-KA4-711	O-RING, 35.2 x 2.4	(2)	○	○	○		○		
24	91358-MA6-003	O-RING, 39.5 x 2.0	(2)	○	○	○		○		

○ R/L FRONT FORK ASSY



Ref. No.	Part No.	Description		Reqd. No.				Interchangeability		Remarks
				TTF-1	S/B	E	OPT.	Single	Set	
• 1	51400-NL0-821	FORK ASSY, R. front	1	○	○	○		X		Not included in set.
• 2	51402-NL0-821	SPRING, front fork 0.80	2	○	○	○	○	X		
•	51403-NL0-821	SPRING, front fork 0.85	(2)	○	○	○		X		
•	51404-NL0-821	SPRING, front fork 0.90	2	○	○	○	○	X		
• 3	51404-MR7-003	SEAT, spring	(2)	○	○	○		○		
• 4	51405-KA4-711	SEAT, spring	(2)	○	○	○		○		
• 5	51406-NL0-821	COLLAR, spring	(2)	○	○	○		X		
• 6	51410-MR7-003	PIPE COMP, front fork	(2)	○	○	○		○		
• 7	51412-KA4-711	RING, back up	(2)	○	○	○		○		
• 8	51414-MN1-671	BUSH, guide	(2)	○	○	○		○		
• 9	51415-KS6-831	BUSH, slider	(2)	○	○	○		○		
• 10	51421-NL0-003	CASE COMP, R. bottom	(1)	○	○	○		X		
• 11	51430-NL0-821	DAMPER COMP, front	(2)	○	○	○		X		
• 12	51432-MR7-003	PIPE, oil lock	(2)	○	○	○		○		
• 13	51435-NL0-821	ADJUSTER COMP, front fork	(2)	○	○	○		X		

○ REAR AXLE · REAR FORK



Ref. No.	Part No.	Description		Reqd. No.				Interchangeability		Remarks
				TTF-1	S/B	E	OPT.	Single	Set	
• 1	42300-NL0-810	AXLE COMP., rear	1				○	○		
2	42302-MR7-000	BOLT, rear axle	(1)				○	○		
• 3	52100-NL0-810	FORK ASSY., rear	1				○	○		
4	52102-MR7-000	COLLAR, rear fork pivot	(1)				○	○		
5	52106-MR7-000	COLLAR B, pivot	(1)				○	○		
6	52170-MR7-000	SLIDER, chain	(1)				○	○		
7	90113-MR7-000	BOLT, drive pin	(4)				○	○		
8	90114-MR7-000	PIN, drive	(4)				○	○		
9	91071-MR7-003	BEARING, needle	(1)				○	○		
10	91072-MR7-003	BEARING, ball, radial 20 x 37 x 9	(2)				○	○		
11	91202-MR7-003	DUST-SEAL, 28 x 37 x 4	(1)				○	○		
12	91214-MR7-003	DUST-SEAL, 26 x 37 x 5	(1)				○	○		
13	91285-MR7-003	DUST-SEAL, 20 x 31 x 5	(2)				○	○		
14	93600-05012-0A	SCREW, flat, 5 x 12	(4)				○	○		
15	94520-37000	CIR-CLIP, internal, 37	(1)				○	○		

'89-VFR750R PART NO. INDEX

Part No.	Block	Part No.	Block	Part No.	Block	Part No.	Block
23802-NL0-820	2-12	37000		42000		45113-MR7-006	2-20
23802-NL0-840	2-13					45114-MR7-006	2-20
		37250-NC9-000	2-11	42300-NL0-810	2-23	45117-NL0-003	2-20
		37255-NL0-008	2-11	42302-MR7-000	2-23	45118-NL0-003	2-20
30000		37460-NC9-900	2- 9	42605-NL0-810	2-19	45200-NL0-821	2-20
				42606-NL0-810	2-19	45209-166-006	2-20
30400-NL0-000	2-11			42607-NL0-810	2-19	45209-MA7-006	2-20
30501-NL0-000	2-11	40000		42704-NL0-810	2-19	45250-NF7-000	2-20
30502-NL0-000	2-11					45260-NF7-000	2-20
30507-107-000	2-11	40530-NL0-305	2-12				
30511-NL0-010	2-11	40530-NL0-811	2-13	43000		50000	
	2-14	40535-NL0-305	2-12				
30512-NL0-000	2-11	40535-NL0-811	2-13	43352-568-003	2-20		
30752-NL0-000	2-14			43353-461-771	2-20	50231-NL0-000	2-15
30754-NL0-000	2-14					50805-NL0-000	2-14
		41000					
				44000		51000	
31000		41237-NL0-821	2-12				
		41237-NL0-841	2-13	44301-NL0-810	2-19		
31520-NL0-000	2-11	41238-NL0-003	2-12	44600-NL0-810	2-19	51400-NL0-821	2-21
31700-NL0-000	2-11	41238-NL0-811	2-13	44601-NL0-810	2-19	51402-NL0-821	2-21
31910-NF2-005	2- 4	41239-NL0-003	2-12	44602-NL0-810	2-19	51403-NL0-821	2-21
31911-NF2-005	2- 4	41239-NL0-811	2-13	44620-NC8-000	2-19	51404-MR7-003	2-21
31912-NF2-005	2- 4	41240-NL0-811	2-13	44622-NL0-810	2-19	51404-NL0-821	2-21
		41241-NL0-003	2-12			51405-KA4-711	2-21
		41241-NL0-811	2-13			51406-NL0-821	2-21
32000		41242-NL0-003	2-12	45000		51410-MR7-003	2-21
		41242-NL0-811	2-13			51412-KA4-711	2-21
32100-NL0-000	2-11	41243-NL0-003	2-12	45100-NL0-821	2-20	51414-MN1-671	2-21
32100-NL0-810	2-11	41243-NL0-811	2-13	45103-MR7-006	2-20	51415-KS6-831	2-21
32101-NL0-000	2-14			45105-NL0-810	2-20	51421-NL0-003	2-21
				45105-NL0-821	2-20	51430-NL0-821	2-21
				45109-MR7-006	2-20	51432-MR7-003	2-21

'89-VFR750R PART NO. INDEX

Part No.	Block	Part No.	Block	Part No.	Block	Part No.	Block
00000		12000		16022-NL0-820	2- 7	18371-NL0-000	2- 8
06130-NL0-820	2- 3	12207-NL0-820	2- 3	16025-NL0-004	2- 5	18380-NL0-820	2- 8
06160-NL0-000	2- 5	12225-NL0-820	2- 3	16040-NL0-014	2- 5	18385-NL0-820	2- 8
06180-NL0-820	2- 8	12227-NL0-820	2- 3	16047-NL0-004	2- 5		
06190-NL0-000	2- 9	12251-MR7-003	2- 3	16050-NF1-811	2- 5	19000	
06195-NL0-810	2-10				2- 7		
06230-NL0-810	2- 6			16100-NL0-004	2- 5	19010-NL0-003	2- 9
06412-NL0-820	2-12	13000		16111-NL0-004	2- 5	19037-NL0-003	2- 9
06413-NL0-840	2-13			16151-NL0-004	2- 5	19050-NL0-811	2-10
06508-NL0-010	2-14	13101-NL0-820	2- 3		2- 7	19051-KA3-830	2- 9
06524-NL0-820	2-15	13102-NL0-820	2- 3	16152-NL0-004	2- 5		2-10
06531-NL0-000	2-16	13121-NL0-821	2- 3		2- 7	19052-KA3-830	2- 9
06532-NL0-810	2-17	13123-NL0-821	2- 3	16153-NL0-004	2- 5	19130-NL0-000	2- 9
06537-NL0-010	2-18	13141-NL0-821	2- 4		2- 7	19505-KS6-700	2- 4
		13143-NL0-821	2- 4				
11000		14000		17000		22000	
11202-NF1-000	2- 3			17358-NL0-820	2- 4	22441-NL0-000	2- 4
11203-NF1-000	2- 3	14407-NL0-820	2- 4				
11204-ND6-000	2- 3	14711-NL0-820	2- 4	18000		23000	
11210-NL0-820	2- 3						
11315-ML7-000	2- 3	15000		18291-NL0-000	2- 8	23211-NL0-810	2- 6
11330-NL0-810	2- 3			18292-NL0-000	2- 8	23421-NL0-810	2- 6
11343-ML7-000	2- 3	15151-NL0-820	2- 4	18293-MN5-650	2-14	23431-NL0-810	2- 6
11394-ML7-000	2- 3			18293-NL0-000	2- 8	23441-NL0-810	2- 6
11632-ML7-000	2- 3	16000		18300-NL0-820	2- 8	23481-NL0-810	2- 6
11636-MR7-000	2- 3			18332-KS6-000	2- 8	23491-NL0-810	2- 6
11641-NL0-820	2- 3	16020-NL0-820	2- 7	18350-NL0-820	2- 8	23501-NL0-810	2- 6
		16021-NL0-820	2- 7	18360-NL0-820	2- 8	23521-NL0-810	2- 6
				18370-NL0-820	2- 8	23801-NL0-810	2-13

'89-VFR750R PART NO. INDEX

Part No.	Block	Part No.	Block	Part No.	Block	Part No.	Block
51435-NL0-821	2-21	53113-NF1-810	2-16	90601-107-000	2- 6	94000	
51447-KA4-711	2-22	53122-NF1-810	2-17	90603-MN4-000	2- 6		
51454-NL0-003	2-22	53123-NF1-810	2-16			94031-18000	2-15
51500-NL0-821	2-22	53210-NL0-810	2-17			94050-06080	2- 9
51521-NL0-003	2-22	53211-NL0-810	2-17	91000			2-11
		53234-NL0-810	2-17				2-14
		53235-NL0-810	2-17	91002-NF1-000	2- 6	94101-04000	2-11
52000		53700-NL0-003	2-18	91056-NC8-000	2-19	94101-05000	2-11
		53705-NL0-000	2-18	91071-MR7-003	2-23	94520-37000	2-23
52100-NL0-810	2-23	53710-NL0-010	2-18	91072-MR7-003	2-23	94601-17000	2- 4
52102-MR7-000	2-23	53713-NC8-000	2-18	91081-NF1-700	2- 8		
52106-MR7-000	2-23			91082-NL0-000	2-11		
52170-MR7-000	2-23			91202-MR7-003	2-23	95000	
52400-NL0-821	2-15	55000		91214-MR7-003	2-23		
52401-MR7-003	2-15			91255-KA4-831	2-22	95701-06018-00	2- 9
52402-NL0-821	2-15	55220-NF8-000	2- 4	91285-MR7-003	2-23	95701-06040-00	2-11
52404-NL0-821	2-15			91308-ND6-000	2- 4		
52415-NL0-000	2-15			91311-MR7-003	2-22		
52424-MA0-003	2-15	90000		91356-KA4-711	2-22	96000	
52442-KA3-711	2-22			91358-MA6-003	2-22		
52459-964-003	2-15	90004-492-010	2- 6			96001-06020-00	2-16
52462-NL0-000	2-15	90005-ND6-000	2- 4				2-17
52463-NL0-000	2-15	90102-MR7-006	2-20	92000		96001-06025-00	2- 9
52472-NL0-000	2-15	90113-MR7-000	2-23				2-18
		90114-MR7-000	2-23	92101-05032-0A	2-11	96001-06028-00	2-18
		90124-MR7-006	2-20			96001-06032-00	2-18
53000		90126-MR7-003	2-22			96001-06032-07	2-14
		90201-MB0-770	2- 4	93000		96300-08028-08	2-16
53105-300-970	2-16	90305-NL0-810	2-19				2-27
	2-17	90309-428-731	2-18	93600-05012-0A	2-23	96700-08032-10	2-18
53111-ND5-760	2-16	90309-NL0-003	2-22			96700-08035-10	2-18
	2-17	90403-KA3-830	2- 9				
53112-NF1-810	2-17		2-10				

'89-VFR750R PART NO. INDEX

Part No.	Block	Part No.	Block	Part No.	Block	Part No.	Block
99000							
99101-357-1420	2- 7						
99101-357-1450	2- 5						
	2- 7						
99101-357-1480	2- 5						
	2- 7						
99101-357-1500	2- 5						
	2- 7						
99101-357-1520	2- 5						
	2- 7						
99101-357-1550	2- 5						
	2- 7						
99101-357-1580	2- 5						
	2- 7						
99101-357-1600	2- 5						
99103-437-0400	2- 7						
99103-437-0420	2- 5						
	2- 7						
99103-437-0450	2- 5						
	2- 7						
99103-437-0480	2- 5						